

## TALULAH BALLAST PUMPS

FEATURES	BENEFITS	COMPETITIVE ADVANTAGES
High capacity 13.5 GPM & 30 GPM	Capacity promotes quick fill & quick drain minimizing downtime	Highest capacity
Self-priming	Durable materials promote longer life and reliability	<b>AVAILABLE SIZES</b> 13.5 GPM – 12V & 24V 30 GPM – 12V
Reversible	Run dry protection shuts pump down when water is not present	
Ball bearing design with bronze head	Ignition protected design allows safe installation in the bilge compartment	
Thermal overload (run dry) motor protection		
Intermittent duty		
Complies with USCG 183.410 & ISO 8846 (ignition protection)		



**Talulah Ballast Pump**



**Talulah HP Ballast Pump**

## TECHNICAL SPECIFICATIONS

PART NUMBER	DESCRIPTION
10-24690-18	Talulah 13.5 GPM Ballast Pump, 12V
10-24690-04	Talulah 13.5 GPM Ballast Pump, 24V
10-24939-18	Talulah HF 30 GPM Ballast Pump, 12V



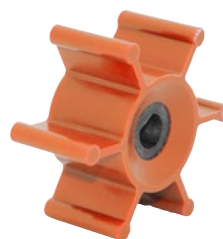
Talulah HF Ballast Pump

## PUMP DIMENSIONS

MODEL	LENGTH	WIDTH	HEIGHT	WEIGHT
Talulah 13.5 GPM	8" (202 mm)	4.72" (120 mm)	3.54" (90 mm)	6.6 lbs (3 kg)
Talulah HF 30 GPM	11" (279 mm)	6" (152 mm)	3.54" (90 mm)	7.4 lbs (3.35 kg)

## GENERAL INFORMATION

PUMP	Talulah	Talulah HP
BODY	Bronze	Bronze
IMPELLER	09-824P-2 (Replaces 09-824P-1EZ)	09-849P-2
SEAL	Lip Seal	Lip Seal
CONNECTIONS	Hose 1"	Hose 1.5"



09-824P-2



09-849P-2

# SPXFLOW®

SPX FLOW, Inc. reserves the right to incorporate our latest design and material changes without notice or obligation. Design features, materials of construction and dimensional data, as described in this bulletin, are provided for your information only and should not be relied upon unless confirmed in writing. Please contact your local sales representative for product availability in your region. The green "➤" is a trademark of SPX FLOW, Inc.

For more information, visit [www.spxflow.com/johnson-pump-marine](http://www.spxflow.com/johnson-pump-marine)