



a **xylem** brand

Model 12290-Series Self-Priming Pumps

INSTALLATION AND OPERATION MANUAL



Self-Priming Pumps

Model 12290-Series

FEATURES

Body:	Phenolic Plastic
Impeller:	Viton*
Seal:	Lip Type
Ports:	5/8" OD for Hose Connections
Shaft:	Shaft of Motor (Stainless Steel)
Motor:	115 Vac, 1/6 hp, 1750 RPM, 60 Hz, relay start and thermal over-load protector, three-prong ground plug
Weight:	12 lb (5.4 kg) approx.

* Viton is a registered trademark of E.I. Du Pont de Nemours and Company.

MODEL	DESCRIPTION
12290-0004	Viton impeller and seal; open drip proof motor
12290-0274	Viton impeller and seal; totally enclosed motor

APPLICATIONS

Designed as a low cost pump for: transfers, circulation, spill returns, filtration and filling line use. Easily handles pure solutions, foaming liquids, emulsions, suspended solids and ferments with viscosities less than 500 SSU (120 cp). Because the plastic pump is resistant to corrosion and metallic contamination, it is widely used for pumping photo chemicals, plating compounds, lab solutions, pharmaceuticals, cosmetics, weak acids, alkalies, liquid fertilizers, insecticides, dyes, detergents, waxes and many more.

See the Jabsco Chemical Resistance Table in the Industrial Catalog, available upon request from Jabsco, which has been prepared to help you select the most suitable impeller and pump material.

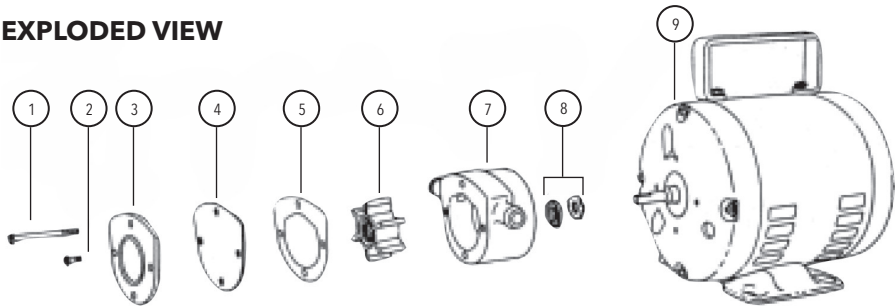


Explosion hazard. Do not use where flammable vapors are present. Motor can spark causing an explosion which can cause property damage, personal injury or death.

OPERATING INSTRUCTION

- 1. INSTALLATION** - Pump may be mounted in any position. Intake port is on right when viewing pump end cover.
- 2. SELF-PRIMING** - Vertical dry suction lift of up to 10 feet (3 m) for neoprene; 5 feet (1.5 m) for nitrile and viton. Pump will produce suction lift up to 15 feet (4.5 m) when wetted. **BE SURE SUCTION LINES ARE AIRTIGHT OR PUMP WILL NOT SELFPRIME.**
- 3. DISCHARGE LINE** - When transferring liquids further than 25 feet (7.6 m), use 3/4 inch (19 mm) discharge line.
- 4. RUNNING DRY** - Unit depends on liquid pumped for lubrication. **DO NOT RUN DRY FOR MORE THAN 30 SECONDS.** Lack of liquid will damage the impeller and other pump components.
- 5. NOTICE** - When corrosive fluids are handled, pump life will be prolonged if pump is flushed with water after each use or after each work day. For further information, contact factory.
- 6. PRESSURES** - For continuous operation, pressure should not exceed 15 psi (1.05 kg/cm).
- 7. TEMPERATURES** - Impeller is suitable for service as follows: Viton impeller 60° to 180° F (15.6° to 82.2°C).
- 8. SPARE PARTS** - A Jabsco Service Kit should be kept on hand to maintain all but the most badly worn pumps.

EXPLODED VIEW



SERVICE INSTRUCTIONS

DISASSEMBLY

- 1. Remove end cover screws, end cover, wearplate and gasket.
- 2. Remove impeller.
- 3. Remove body
- 4. Pry seal retainer from seal cavity and press seal out of cavity from impeller bore side.

NOTE: Inspect all parts for wear or damage and replace if necessary.

ASSEMBLY

- 1. Press seal into seal cavity with lip towards impeller bore until it bottoms firmly against shoulder. Center seal retainer (concave side up) in seal cavity and press it firmly against seal using 11/16" diameter. dowel or 3/8" steel pipe.
- 2. Install body on motor shaft loosely.
- 3. Install impeller in lubricated impeller bore.
- 4. Lubricate impeller face.
- 5. Install gasket, wearplate and end cover on body and secure with short screws.
- 6. Secure body to motor with long screws.

PARTS LIST

KEY	DESCRIPTION	PART NUMBER	QTY.
1	Screw Kit (body to motor)	91014-0010	2
2	Screw Kit (end cover)	—	2
3	End Cover Kit	—	1
4	Wearplate Kit	—	1
5	Gasket Kit	12558-0000	1
6	Impeller Kit*		
	Nitrile	7272-0003-P	
	Viton	17273-0004	
7	Body Kit	12554-0000	1
8	Lip Seal Kit*		1
	Viton	1040-0001	
9	Motor Kit		1
	Open drip proof	18740-0000	
	Totally enclosed	18742-0000	
	Pump Head Kit		
	w/Viton impeller	12590-0021	
	Service Kit		
	w/Viton impeller	90126-0004	

* Parts supplied in Service Kit.

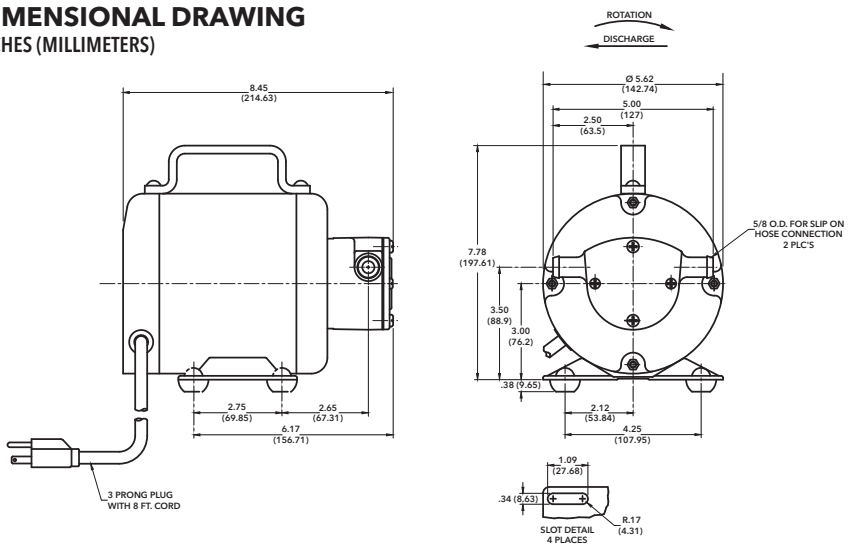
CAPACITY CHART @ 1750 RPM

Total Head				Flow	
PSI	kg/cm²	feet / meters of water		GPM	L/min
4.3	0.30	10	3.0	5.8	22
8.7	0.61	20	6.1	5.0	18.9
13.0	0.91	30	9.1	3.8	14.4



NOTICE: END OF LIFE PRODUCT DISPOSAL.
Handle and dispose of all waste in compliance with local laws and regulations.

DIMENSIONAL DRAWING
INCHES (MILLIMETERS)



WARRANTY

XYLEM LIMITED WARRANTY WARRANTS THIS PRODUCT TO BE FREE OF DEFECTS AND WORKMANSHIP FOR A PERIOD OF 1 YEAR FROM DATE OF MANUFACTURE. THE WARRANTY IS EXCLUSIVE AND IN LIEU OF ANY AND ALL OTHER EXPRESS OR IMPLIED WARRANTIES, GUARANTEES, CONDITIONS OR TERMS OF WHATEVER NATURE RELATING TO THE GOODS PROVIDED HEREUNDER, INCLUDING WITHOUT LIMITATION ANY IMPLIED WARRANTIES OF MERCHANTABILITY AND FITNESS FOR A PARTICULAR PURPOSE, WHICH ARE HEREBY EXPRESSLY DISCLAIMED AND EXCLUDED. EXCEPT AS OTHERWISE PROVIDED BY LAW, BUYER'S EXCLUSIVE REMEDY AND SELLER'S AGGREGATE LIABILITY FOR BREACH OF ANY OF THE FOREGOING WARRANTIES ARE LIMITED TO REPAIRING OR REPLACING THE PRODUCT AND SHALL IN ALL CASES BE LIMITED TO THE AMOUNT PAID BY THE BUYER HEREUNDER. IN NO EVENT IS SELLER LIABLE FOR ANY OTHER FORM OF DAMAGES, WHETHER DIRECT, INDIRECT, LIQUIDATED, INCIDENTAL, CONSEQUENTIAL, PUNITIVE, EXEMPLARY OR SPECIAL DAMAGES, INCLUDING BUT NOT LIMITED TO LOSS OF PROFIT, LOSS OF ANTICIPATED SAVINGS OR REVENUE, LOSS OF INCOME, LOSS OF BUSINESS, LOSS OF PRODUCTION, LOSS OF OPPORTUNITY OR LOSS OF REPUTATION. THIS WARRANTY IS ONLY A REPRESENTATION OF THE COMPLETE LIMITED WARRANTY. FOR A DETAILED EXPLANATION, PLEASE VISIT US AT www.xylen.com/en-us/support/, CALL OUR OFFICE NUMBER LISTED, OR WRITE A LETTER TO YOUR REGIONAL OFFICE.

RETURN PROCEDURE

Warranty returns are conducted through the place of purchase. Please contact the appropriate entity with a receipt of purchase to verify date.



a xylem brand

Xylem Inc. – USA
17942 Cowan
Irvine, CA 92614

Xylem Inc. – UK
Harlow Innovation Park
London Road, Harlow, Essex, CM17 9TX

Xylem Inc. – CHINA
30/F Tower A, 100 Zunyi Road
Shanghai 200051

Xylem Inc. – HUNGARY KFT
2700 Cegléd
Külso-Katai út 41

Xylem Inc. – AUSTRALIA
14 Emporium Avenue
Kemps Creek, NSW 2178

www.xylen.com/jabsco

© 2024 Xylem Inc. All rights reserved
Jabsco is a trademark of Xylem Inc. or one of its subsidiaries
43000-0021 Rev. C 08/2024